

# Fluorophore selection guide for cell imaging

Use the selection guide below to choose the Invitrogen™ dye that best matches your light source and experimental needs.



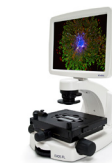
	EVOS DAPI Light Cube (AMEP4650) Ex: 357/44 nm; Em: 447/60 nm	EVOS GFP Light Cube (AMEP4651) Ex: 470/22 nm; Em: 510/42 nm	EVOS RFP Light Cube (AMEP4652) Ex: 531/40 nm; Em: 593/40 nm	EVOS Texas Red Light Cube (AMEP4655) Ex: 585/29 nm; Em: 624/40 nm	EVOS Cy5 Light Cube (AMEP4656) Ex: 628/40 nm; Em: 693/40 nm
<b>Apoptosis</b>	Alexa Fluor 350 Annexin V Conjugate (A23202)	CellEvent Caspase 3/7 Green Detection Reagent (C10423) Click-iT Plus TUNEL Assay, Alexa Fluor 488 dye (C10617) Image-iT LIVE Green Caspase-3 and -7 Detection Kit (I35106)	Alexa Fluor 555 Annexin V Conjugate (A35108) Image-iT LIVE Red Caspase-3 and -7 Detection Kit (I35102) Image-iT LIVE Red Poly Caspases Detection Kit (I35101)	Alexa Fluor 594 Annexin V Conjugate (A13203) Click-iT Plus TUNEL Assay, Alexa Fluor 594 Dye (C10618)	Alexa Fluor 647 Annexin V Conjugate (A23204) Click-iT Plus TUNEL Assay, Alexa Fluor 647 Dye (C10619)
<b>Autophagy</b>		Premo Autophagy Tandem Sensor RFP-GFP-LC3B Kit (P36239) Premo Autophagy Sensor LC3B-GFP (P36235) Premo Autophagy Sensor GFP-p62 Kit (P36240)	Premo Autophagy Tandem Sensor RFP-GFP-LC3B Kit (P36239) Premo Autophagy Sensor LC3B-RFP (P36236) Premo Autophagy Sensor RFP-p62 Kit (P36241)		
<b>Cell tracing and tracking</b>	CellTrace Calcein Blue, AM (C34853) CellTracker Blue CMAC Dye (C2110) CellTracker Blue CMF <sub>2</sub> HC Dye (C12881)	CellTrace Calcein Green, AM (C34852) CellTracker Green CMFDA Dye (C7025) Vybrant DiO Cell-Labeling Solution (V22886)	CellTracker Orange CMRA Dye (C34551) CellTracker Orange CMTMR Dye (C2927) Vybrant DiI Cell-Labeling Solution (V22885)	CellTracker Red CMTMX Dye (C34552)	CellTracker Deep Red Dye (C34565) Vybrant DiD Cell-Labeling Solution (V22887)
<b>Cytoskeleton stains</b>	Alexa Fluor 350 Phalloidin (A22281)	Alexa Fluor 488 Phalloidin (A12379) CellLight Actin-GFP (C10582) CellLight Tubulin-GFP (C10613) ActinGreen 488 ReadyProbes Reagent (R37110)	Alexa Fluor 555 Phalloidin (A34055) CellLight Actin-RFP (C10583) CellLight Tubulin-RFP (C10614) ActinRed 555 ReadyProbes Reagent (R37112)	Alexa Fluor 594 Phalloidin (A12381)	Alexa Fluor 647 Phalloidin (A22287)
<b>Endocytosis</b>		CellLight Early Endosomes-GFP (C10586) pHrodo Green Dextran, 10,000 MW (P35368) LysoTracker Green DND-26 (L7526)	CellLight Early Endosomes-RFP (C10587) pHrodo Red Dextran, 10,000 MW (P10361) pHrodo Red Epidermal Growth Factor (EGF) Conjugate (P35374)	LysoTracker Red DND-99 (L7528)	LysoTracker Deep Red (L12492)
<b>Neuronal tracing and staining</b>	Alexa Fluor 350 Hydrazide (A10439)	DiO (D275) Alexa Fluor 488 Dextran, 10,000 MW (D22910) NeuroTrace 500/525 Green Fluorescent Nissl Stain (N21480)	DiI (D282) Alexa Fluor 555 Dextran, 10,000 MW (D34679) Tetramethylrhodamine Dextran, 10,000 MW (D1817)	Alexa Fluor 594 Hydrazide (A10438) Alexa Fluor 594 Biotin (A12922) Alexa Fluor 594 Dextran, 10,000 MW (D22913)	DiD (D7757) Alexa Fluor 647 Hydrazide (A20502) Alexa Fluor 647 Dextran, 10,000 MW (D22914)
<b>Nuclear stains</b>	DAPI (D1306) Hoechst 33342 (H3570) NucBlue Fixed Cell ReadyProbes Reagent (R37606)	SYTO 9 Green Fluorescent Nucleic Acid Stain (S34854) SYTOX Green Nucleic Acid Stain (S7020) CellLight Nucleus-GFP (C10602)	SYTO 82 Orange Fluorescent Nucleic Acid Stain (S11363) CellLight Nucleus-RFP (C10603)		TO-PRO-3 Iodide (T3605) HCS NuclearMask Deep Red Stain (H10294)
<b>Oxidative stress</b>		CellROX Green Reagent (C10444) CM-H <sub>2</sub> DCFDA (C6827) DAF-FM Diacetate (D23844)	CellROX Orange Reagent (C10443) Dihydroethidium (D11347)	MitoSOX Red Superoxide Indicator (M36008)	CellROX Deep Red Reagent (C10422)
<b>Phagocytosis</b>		pHrodo Green <i>E. coli</i> BioParticles Conjugate (P35366) pHrodo Green <i>S. aureus</i> BioParticles Conjugate (P35367) pHrodo Green Zymosan BioParticles Conjugate (P35365)	pHrodo Red <i>E. coli</i> BioParticles Conjugate (P35361) pHrodo Red <i>S. aureus</i> BioParticles Conjugate (A10010) pHrodo Red Zymosan BioParticles Conjugate (P35364)		
<b>Plasma membrane stains</b>	Alexa Fluor 350 Wheat Germ Agglutinin (WGA) Conjugate (W11263)	Alexa Fluor 488 Wheat Germ Agglutinin (WGA) Conjugate (W11261) CellMask Green Plasma Membrane Stain (C37608) CellLight Plasma Membrane-GFP (C10607)	Alexa Fluor 555 Wheat Germ Agglutinin (WGA) Conjugate (W32464) CellMask Orange Plasma Membrane Stain (C10045) CellLight Plasma Membrane-RFP (C10608)	Alexa Fluor 594 Wheat Germ Agglutinin (WGA) Conjugate (W11262)	Alexa Fluor 647 Wheat Germ Agglutinin (WGA) Conjugate (W32466) CellMask Deep Red Plasma Membrane Stain (C10046)
<b>Proliferation</b>		Click-iT Plus EdU Alexa Fluor 488 Imaging Kit (C10637)	Click-iT Plus EdU Alexa Fluor 555 (C10638)	Click-iT Plus EdU Alexa Fluor 594 Imaging Kit (C10639)	Click-iT Plus EdU Alexa Fluor 647 Imaging Kit (C10640)
<b>Viability</b>	ReadyProbes Cell Viability Kit, Blue/Green (R37609) ReadyProbes Cell Viability Kit, Blue/Red (R37610)	LIVE/DEAD Viability/Cytotoxicity Kit (L3224) LIVE/DEAD Cell Imaging Kit (488/570) (R37601) ReadyProbes Cell Viability Kit, Blue/Green (R37609)	LIVE/DEAD Viability/Cytotoxicity Kit (L3224) ReadyProbes Cell Viability Kit, Blue/Red (R37610)	LIVE/DEAD Cell Imaging Kit (488/570) (R37601)	NucRed Dead 647 ReadyProbes Reagent (R37113)



Perform multiplex experiments by selecting a combination of fluorescent reagents for detection using interchangeable Invitrogen™ EVOS™ light cubes. These LED cubes are compatible with the Invitrogen™ EVOS FL Auto 2 and EVOS FL Imaging Systems and the Invitrogen™ Countess™ II FL Automated Cell Counter, each of which can be configured in your lab. There are more than 20 light cubes to choose from, and they can easily be transferred between systems.



EVOS FL Auto 2 Imaging System



EVOS FL Imaging System



Countess II FL Automated Cell Counter

To learn more, visit [thermofisher.com/microscopes](http://thermofisher.com/microscopes)